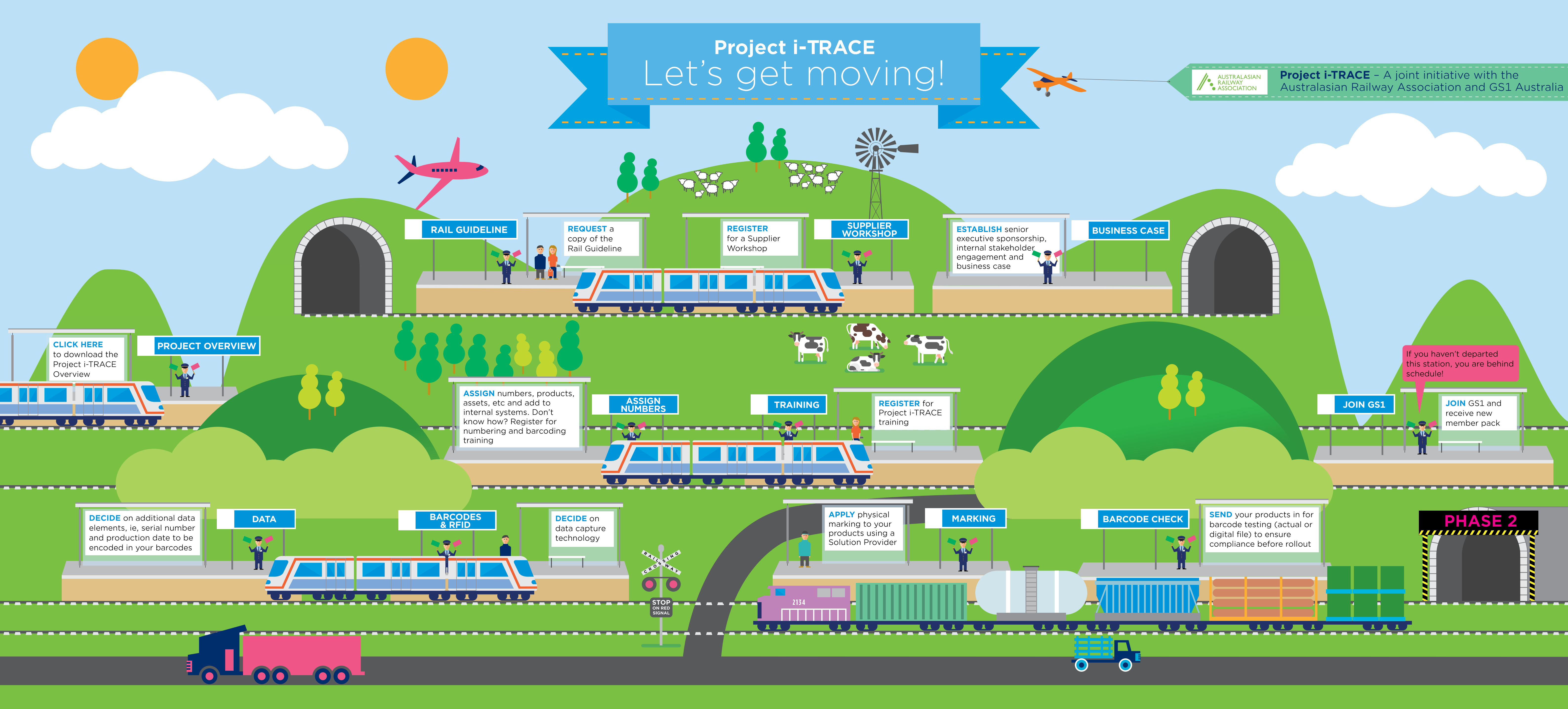


Project i-TRACE Let's get moving!



Project i-TRACE - A joint initiative with the Australasian Railway Association and GS1 Australia



RAIL GUIDELINE

REQUEST a copy of the Rail Guideline

REGISTER for a Supplier Workshop

SUPPLIER WORKSHOP

ESTABLISH senior executive sponsorship, internal stakeholder engagement and business case

BUSINESS CASE

PROJECT OVERVIEW

CLICK HERE to download the Project i-TRACE Overview

ASSIGN numbers, products, assets, etc and add to internal systems. Don't know how? Register for numbering and barcoding training

ASSIGN NUMBERS

TRAINING

REGISTER for Project i-TRACE training

JOIN GS1

JOIN GS1 and receive new member pack

If you haven't departed this station, you are behind schedule!

DECIDE on additional data elements, ie, serial number and production date to be encoded in your barcodes

DATA

BARCODES & RFID

DECIDE on data capture technology

APPLY physical marking to your products using a Solution Provider

MARKING

BARCODE CHECK

SEND your products in for barcode testing (actual or digital file) to ensure compliance before rollout

PHASE 2

RAILSING CROSSLING STOP ON RED SIGNAL