



# GS1net User Guide ‘Cookbook’

For Suppliers implementing and using GS1net in Australia  
& New Zealand

September 2011

## System Requirements

### Licenses and Trademarks

All product names are copyrights and registered trademarks/trade names of their respective owners.

Information in this document is subject to change without notice. GS1 Australia reserves the right to change (upgrade) data to provide the most accurate, reliable quality product available. Specific mention of a product in this document is not a guarantee by GS1 Australia of complete hardware and software compatibility with your data processing system.

---

## Document Version Control

Release	Nature of Change/Comments	Author
Sep 2011	Updated system requirements to specify support for IE7 and IE8	M.Robb
May 2010	Updated system requirements to include IE8 compatability notes.	M.Robb
Mar 2010	Update community references from 'Australia' to 'Australia & New Zealand'.	M.Robb
Oct 2009	Initial Release	GS1 Australia

---

## Recommended minimum requirements to effectively use GS1net.

- Your internal systems should recognize and process Supplier GTINs (Global Trade Item Numbers), GLNs (Global Location Numbers) and related descriptive product information as specified in the GDSN standard. The level of automation of your internal systems may vary, from a totally manual process to a fully-integrated GS1 XML enabled process. Companies at any level of processing can use GS1net.
- If you choose to implement “machine-to-machine” integration, you should be able to send and receive GDSN Standard GS1 XML documents to GS1net (via the GS1net Validator). If your company is not yet “machine-to-machine enabled”, you can still use the online GS1net capabilities. If your catalogue is relatively small, you can enter it online.
- A personal computer capable of connecting to the internet via your Internet Service Provider (ISP).
  - **Processor** — Intel Pentium 3 or 4 processor.
  - **Memory** — 256 MB or higher
  - **Connectivity** — Broadband Internet Access at 56KB or higher is highly recommended via LAN, DSL, ISDN, or cable modem. You will not have a satisfactory online experience via a dial-up modem.
  - **Operating System** — Windows 2000, WindowsXP (or higher).
  - **Monitor resolution** — 1024 x 768 minimum
  - **Internet browser** — Microsoft Internet Explorer, versions 7.0 and 8.0.
    - Please note: Firefox Users. GS1 Australia has investigated with the platform providers the possibility of allowing multiple browser types for GS1net. We have been advised that although authentication can be done for Firefox, there still remains issues with rendering and Java Script problems. We cannot therefore guarantee that users will have the same experience as IE 7 and IE8 users, and at this stage can not allow Firefox to be used for GS1net.

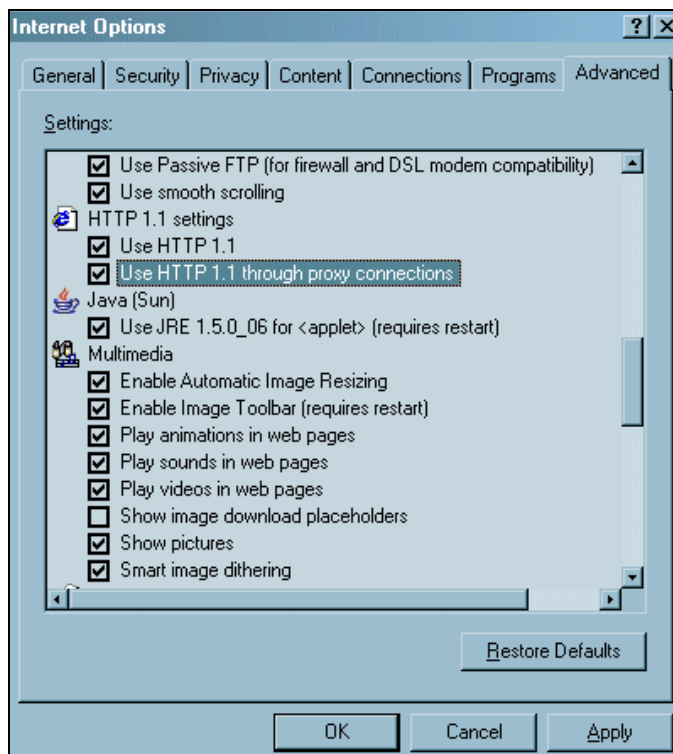
---

## Configure your Internet Browser

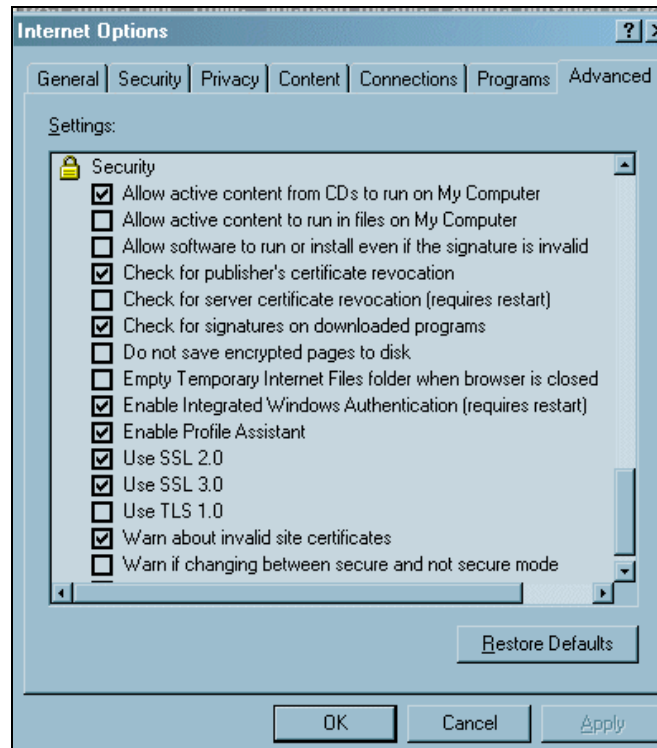
**Remember** You must use **Microsoft Internet Explorer, version 7.0 or 8.0 (must include SP2)**

To properly configure your browser, do the following:

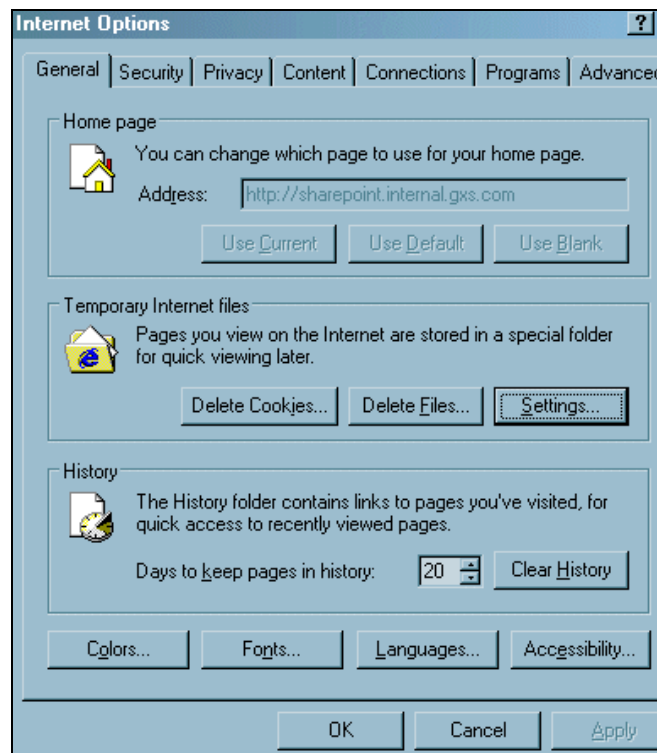
1. On your browser toolbar, click **Tools**, and then select **Internet Options**.
2. On the Internet Options popup window that displays, click the **Advanced** tab.
3. Scroll down to the **HTTP1.1 Settings** section. Then, make sure that the **Use HTTP1.1** and **Use HTTP1.1 through proxy connections** are "checked."



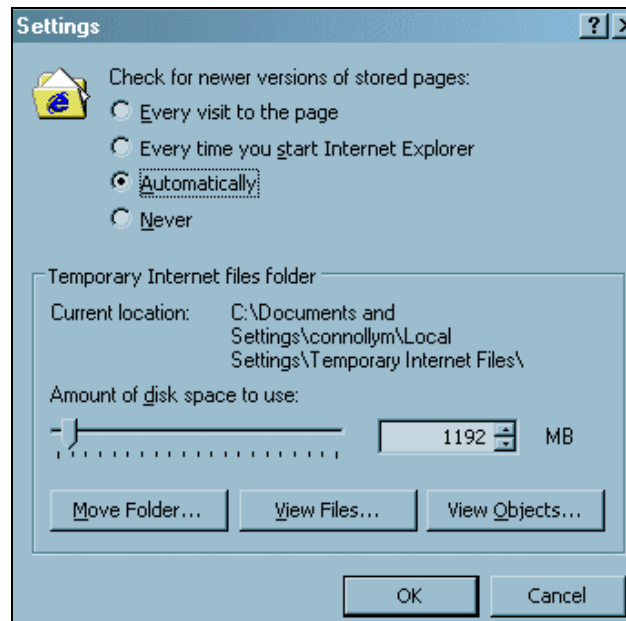
4. Scroll down to the **Security** section. Then, make sure that the **SSL 2.0** and **SSL 3.0** are "checked."



5. Click the **General** tab. Then, in the **Temporary Internet Files** section, click the **Settings** button.



6. In the **Check for newer versions of stored pages** section, select either **Automatically** or **Every time you start Internet Explorer** - Click the **OK** button.



7. Click the **Privacy** tab. Make sure that your **Settings** is **Medium High** or *lower* and that the **Block pop-ups** option is disabled - Click the **OK** button.



8. For the changes to take effect, close your Internet Explorer browser and then reopen it.

### Disable popup blocker

In addition to **Step 9** above, in order to access and use GS1net online, you must disable the popup blocker on your browser menu bar, so that you see the following.

