

The GS1 Supply Chain Knowledge Centre: Interactive training



The GS1 Australia Supply Chain Knowledge Centre is an award winning purpose-built learning facility that demonstrates how supply chain management can make a real difference. Here, the abstract concept of the supply chain is brought to life in an entertaining format that encourages exploration.

A full range of training programs on GS1 System Standards and other key GS1 identification standards, from the introductory to the leading edge are offered to suit professionals who are responsible for planning, maintaining and implementing GS1 Standards.

The learning experience begins in the Simulation Theatre and continues in the interactive Supply Chain Model. GS1 Display Zone and touch-screen kiosks answer questions about the GS1 System and supply chain processes, as well as offering a guide to the technology from GS1 Australia's Solution Providers.

The facility also includes a Partner Room, which hosts periodic displays and events featuring the latest products and services from GS1's Alliance Partners. Fully equipped training rooms and lounge area complement this unique facility.

All Supply Chain Knowledge Centre modules are instructor-led and balance theory with interactive exercises that simulate real life experiences.

Right around Australia

Mastering the supply chain is vital to success, no matter where you are located. A portable version complementing the Melbourne and Sydney Centres regularly tours Australia supporting the Road show to make training truly local. Ask GS1 Australia about having the portable Supply Chain Knowledge Centre visit your site.

GS1 Standards in Action - Seeing is Believing...

Experience the GS1 System at work in a life size logistics supply chain. See how numbering, data carriers and eMessaging are deployed to support a fully integrated supply chain, from raw material suppliers - and all points in the supply chain, through to the consumer.

FREE 45 min journey of discovery.

The Chain Reaction

Understand the nuts and bolts of implementing the GS1 System with a full day training session through the six-module interactive Chain Reaction program.

Led by an expert, the Chain Reaction involves case studies, role-playing, computer simulation, interactive exercises and self-diagnostic materials relating to your own workplace. Your experience concludes with a debriefing discussion and Q & A time, with resources for you to take away. The three session modules include:

Modules 1 & 2

- Introduction – journey to supply chain excellence
- Standards – adopting the GS1 global language of supply chain

Modules 3 & 4

- Processes – linking information flow and work flow
- Organisation – managing people, skills and change

Modules 5 & 6

- Technology – choosing the right tools for trade
- Integration – building capability together

VET Accredited, completion of the Chain Reaction program is recognised with one credit point towards a diploma course.



Above: Interact with Solution providers at the GS1 Australia Supply Chain Knowledge Centre



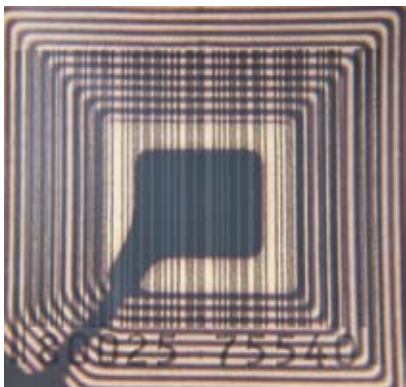
Because supply chain management is one of the most dynamic of all business disciplines, GS1 Australia is always adding new training sessions to keep members abreast of the latest developments.

EPC/RFID

Learn what the EPC Network and RFID are and how they function. Understand GS1's involvement in this exciting technology and how it will complement the GS1 System of Standards.

Analyse the advantages and challenges using the RFID business case and stay up-to-date with the latest implementation projects.

Using the Supply Chain Knowledge Centre simulator, experience EPC and RFID fully deployed across the entire supply chain. It is the perfect opportunity to see what the technology will and won't do and evaluate how it could benefit your business.



Traceability

Threats like bio-terrorism, mad cow disease and bird flu have made the ability to track and trace products and their constituents a global priority.

The US Food and Drug Administration (FDA) and the European Union (EU) have mandated the ability to track and trace products and their ingredients and Australian legislation expected to follow soon.

Much effort both locally and globally is being put into defining supply chain processes by industry sector to meet these requirements. All are based on the ability of the GS1 System to provide the data that facilitates tracking and tracing from origin or production all the way to destination or consumer.

Experience how this is achieved, visit the GS1 Supply Chain Knowledge Centre simulator, and follow the transactions and the data as they move along the supply chain from each trading partner.



Testimonial

"We selected the GS1 Supply Chain Knowledge Centre to be incorporated into the CML B2B electronic trading rollout programme because of its hands on nature. The simulated environment has enabled us to maximise awareness of the strategy amongst our own people, and will enable us to quickly inform our suppliers of the expectations we have of them, and demonstrate the joint benefits we will enjoy as we roll out B2B electronic trading."

Mark Douglass
CML Business Manager B2B