

About EPCglobal

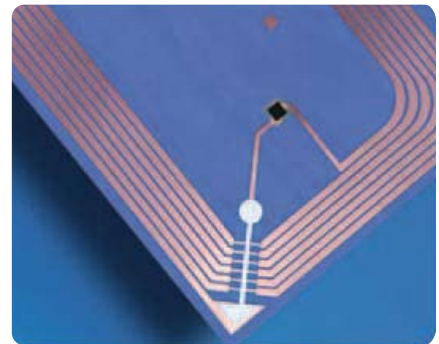
Overview

EPCglobal is industry's trusted partner for driving the global adoption and implementation of the Electronic Product Code (EPC) Network across industry sectors. Our mission is to make organisations more effective by enabling true visibility of information about items in the supply chain. To that end, EPCglobal develops and oversees standards for the EPC Network.

As a joint-venture between GS1 Global Office and the Uniform Code Council (UCC), EPCglobal leverages a nearly thirty year heritage of successfully partnering with industry. EPCglobal is a neutral, consensus-based, not-for-profit standards organisation.

EPC Network

The EPC Network is an open standards-based system that will transform the global supply chain through real-time, automatic identification of items in the supply chain of any company, in any industry, anywhere in the world. The EPC Network was developed by the Auto-ID Centre, a global research team directed through the Massachusetts Institute of Technology (MIT) with laboratories around the world. Their research effort was supported by more than 100 leading companies including one located at Adelaide University in South Australia. Companies and consumers are the ultimate beneficiaries of the EPC Network as it enables organisations to be more efficient, flexible, and responsive to customer needs.



EPCglobal Services

Companies seeking to improve their supply chain management efficiency can access the following services:

- > Assignment and maintenance of EPC Manager numbers
- > Training and education on implementing and using the EPC and the EPC Network
- > Participation in development of business-driven use cases and EPC Network standards
- > Access to EPC Network, network components, research, software specifications
- > Opportunity to influence the future direction of research by the Auto-ID Centre
- > Links with other subscribers to create pilots and test cases



A joint venture between GS1 Global Office and the Uniform Code Council, Inc.

Subscribers of the EPCglobal Network

EPCglobal classifies subscribers in two general categories: end users and solution partners. End users include manufacturers, retailers, wholesalers, carriers, and government. In general terms, end users are the organisations that have objects in motion in the supply chain. Solution partners include hardware and software companies, consultants, systems integrators, and training companies. In general terms, solution partners are the organisations that help the end user community move goods through the supply chain.

Organisational Structure

EPCglobal is a joint-venture between GS1 Global Office and the Uniform Code Council (UCC).

Early subscribers will have the opportunity to join the Implementation Task Force (ITF), a group of early subscribers that will work together during the transition of the EPCglobal's work into the commercialisation phase.

The ITF will focus on real-world business cases and will take much of the work of the user action groups currently in progress through to conclusion as published standards and specifications.

The Implementation Task Force is structured with the following groups:

- > Board of Directors, comprised of representatives of the GS1 and MIT
- > Operating Committee, which will establish the organisation's strategic direction and priorities
- > User Action Group that will address user requirements, suggest business cases, and changes to existing standards
- > Technical Steering Committee that works with the Auto-ID Centre and Technical Action Groups
- > Technical Action Groups, groups focused on a specific topic of study such as hardware and software development and business requirements.

In addition, EPCglobal works closely with the International Public Policy Advisory Council, originally created through the Auto-ID Centre. The council provides independent, expert guidance on many issues including the development of technical safeguards around the EPC Network and the development of guiding principles around technology usage.



For information on EPCglobal contact GS1 Australia
on 1300 366 033 or via email epc@gs1au.org
Alternatively, visit our web site www.gs1au.org/products/epcglobal/